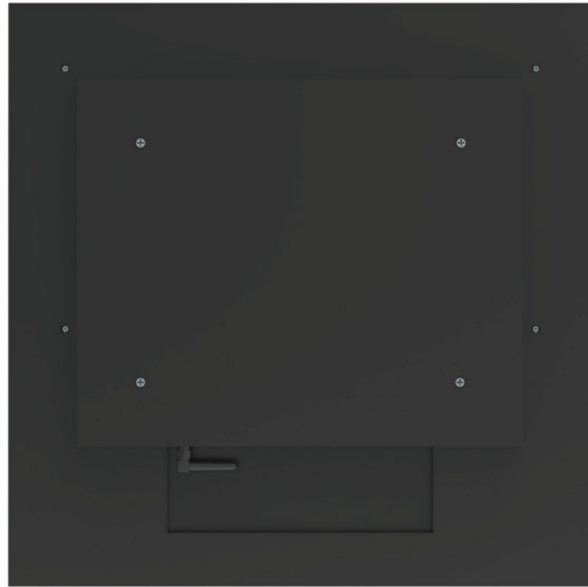
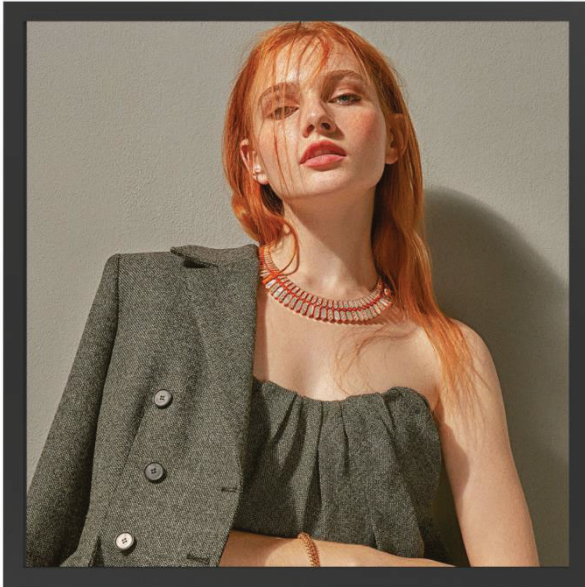


# SPECIFICATION

Product number: EC59BYKA00

Product type: Square screen display



<b>Checked by</b>	<b>Rechecked by</b>	<b>Approved by</b>
<b>Comments</b>	<b>Approved by</b>	<b>Company's seal</b>
<b>Customer's Name:</b>		

Please send the original back to us after you have approved and signed.

Modify History

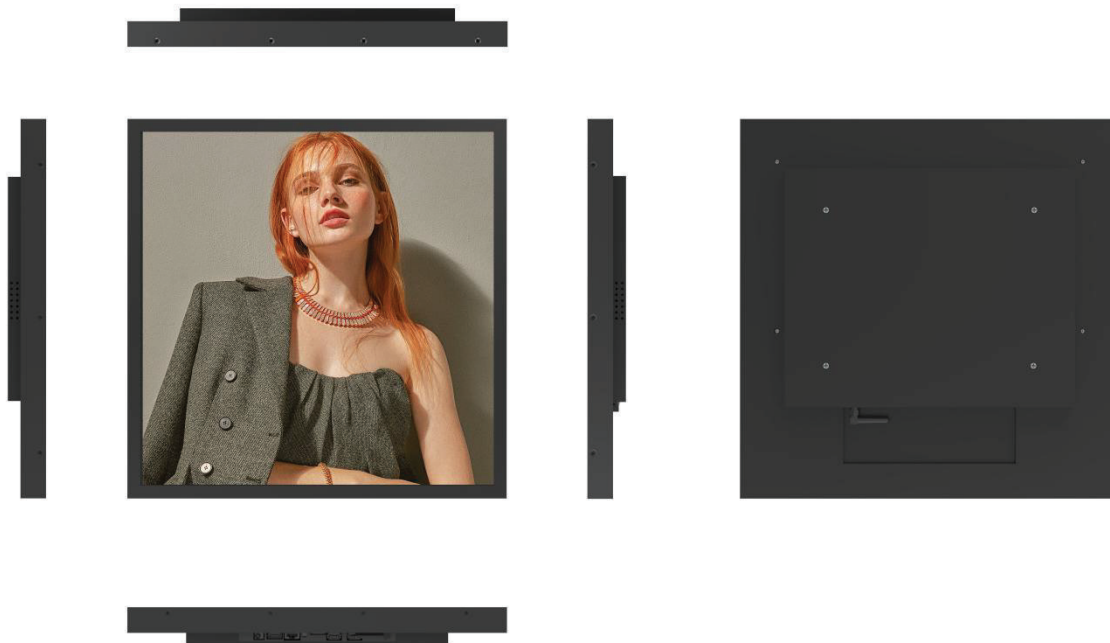
Ver.	Page	Revised Descriptions	Date	Revision	Approval
REV.1.0	ALL	T0	2025.04.16		

# Product Parameter:

59"		Specifications	Units/Number	Notes
Model				
	Dimension	1102 (L)*1102(H)x46(W)	MM	
	Shell material	Black fine sand texture	-	
	Gross Weight	25	Kg/gross	
Screen Parameters	Display Size	1068.18(L)x 1068.18(H)	MM	
	Display- resolution	1900*1900	Pixel	
	Brightness	300	Cd/m <sup>2</sup>	
	Contrast ratio	1200:1	-	
	Display scale	1:1	-	
	Viewing angle	89/89/89/89	-	
	Pixel pitch	0.5622*0.5622	MM	
	Display color	1.07	B	
Electrical	Maximum power	≤200	W	
	Standby power	≤1	W	
	Supply Voltage	12V	V	
	Horn	3W/8 Ω*2	-	
WorkStorage	Operating temperature	0-50	°C	
	Working- humidity	10%~80%	%hr	
	Storage temperature	-20-50	°C	
	Storage Humidity	10%~80%	%hr	
Power interface		AC 110-240V		

59"		Specifications	Units/Number	Notes
Model				
Functional configuration	<b>CPU</b>	RK3288, quad-core, 1.8GHz, Android 5.1.1		
	<b>Operating System</b>	Android 5.1.1		
	<b>Memory Storage</b>	Standard 2G (4G optional) / Standard 8G (16/32/64G optional)		
	<b>built-inROM</b>	/		
	<b>HDMI Out</b>	1, supports 1080P@120Hz, 4kx2k@60Hz output		
	<b>HDMI import</b>	/		
	<b>Support Video-Formats</b>	Supports wmv, avi, flv, rm, rmvb, mpeg, ts		
	<b>Support Image-Formats</b>	Supports BMP, JPEG, PNG, GIF		
	<b>Audio Input/Output</b>	Supports left and right channel output, with built-in dual 4R/20W and 8R/10W power amplifiers		
	<b>Headphone Output</b>	Supports the insertion of one or two earphones		
	<b>USB Interface</b>	2 USB HOST		
	<b>Serial Port</b>	4 serial port sockets (2 TTL +2232), of which 1 is a Bluetooth multiplexed serial port		
	<b>Network Support</b>	Ethernet WIFI		
	<b>Memory Card</b>	Supports SD cards		
	<b>RTC</b>	Supports		
<b>System Upgrade</b>	Supports local SD USB upgrades			

# Product Rendering:



# Product Dimension Drawing:

