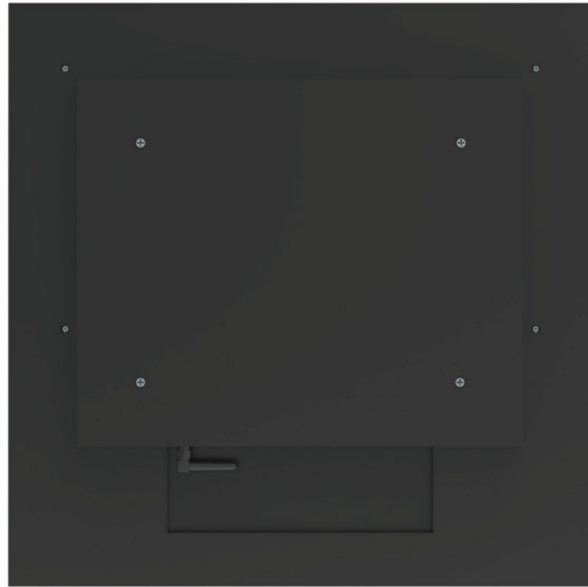
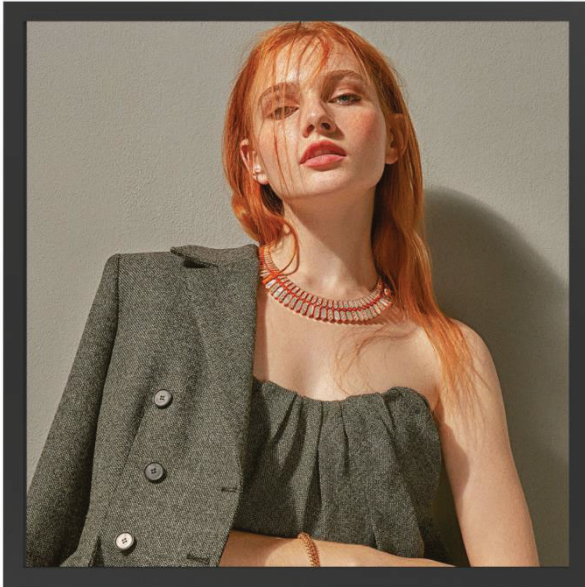


SPECIFICATION

Product number: EC52BYKA00

Product type: Square screen display



Checked by	Rechecked by	Approved by
Comments	Approved by	Company's seal
Customer's Name:		

Please send the original back to us after you have approved and signed.

Modify History

Ver.	Page	Revised Descriptions	Date	Revision	Approval
REV.1.0	ALL	T0	2025.04.16		

Product Parameter:

52"		Specifications	Units/Number	Notes
Model				
	Dimension	975.2 (L)*975.2(H)x65(W)	MM	
	Shell material	Black fine sand texture	-	
	Gross Weight	25	Kg/gross	
Screen Parameters	Display Size	937.65(L)x 937.65(H)	MM	
	Display- resolution	1900*1900	Pixel	
	Brightness	1000	Cd/m ²	
	Contrast ratio	1200:1	-	
	Display scale	1:1	-	
	Viewing angle	89/89/89/89	-	
	Pixel pitch	0.4935*0.4935	MM	
	Display color	1.07	B	
Electrical	Maximum power	≤280	W	
	Standby power	≤1	W	
	Supply Voltage	12V	V	
	Horn	3W/8 Ω*2	-	
WorkStorage	Operating temperature	0-50	°C	
	Working- humidity	10%~80%	%hr	
	Storage temperature	-20-50	°C	
	Storage Humidity	10%~80%	%hr	
Power interface		AC 110-240V		

52"		Specifications	Units/Number	Notes
Model				
Functional configuration	CPU	RK3568V, quad-core, 2.0GHz		
	Operating System	Android 11		
	Memory Storage	2G+32G		
	built-inROM	/		
	HDMI Out	/		
	HDMI import	*1		
	Support Video-Formats	Supports H.265, H.264, VP8, MAV, WMV, AVS, H.263, MPEG4		
	Support Image-Formats	Supports BMP, JPEG, PNG, GIF		
	Audio Input/Output	MP3, WMA, WAV, APE, FLAC, AAC, OGG, M4A, 3GPP		
	Headphone Output	Supports the insertion of one or two earphones		
	USB Interface	1 USB 3.0 HOST port, 1 USB 3.0 OTG port, 4 USB expansion ports		
	Serial Port	4-channel UART, 1-channel DEBUG, 1-channel MCU programming serial port; optional RS232 and RS485.		
	Network Support	Supports Gigabit Ethernet Supports 2.4G/5G dual-mode Wi-Fi, supports Wi-Fi 6, and supports 802.11 a/b/g/n/ac/ax protocols Supports Bluetooth 5.0		
	RTC	Supports		
System Upgrade	Supports local SD USB upgrades			

Product Rendering:



Product Dimension Drawing:

