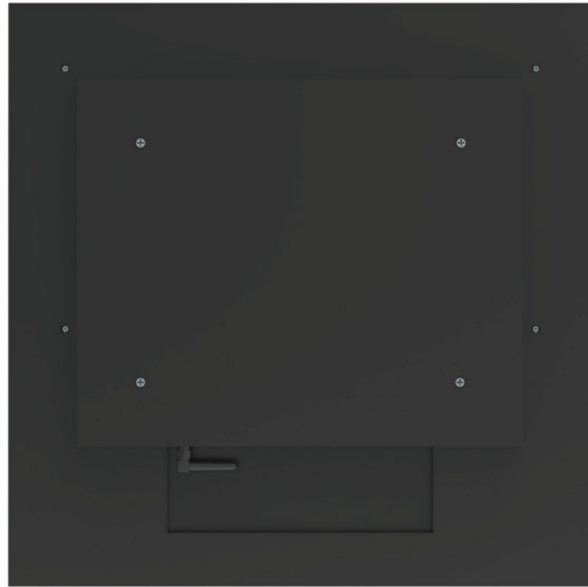
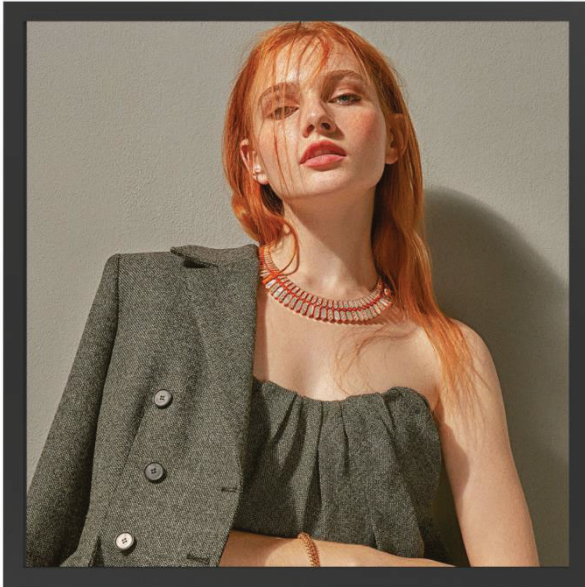


SPECIFICATION

Product number: EC45BYKA00

Product type: Square screen display



| | | |
|-------------------------|---------------------|-----------------------|
| | | |
| Checked by | Rechecked by | Approved by |
| | | |
| | | |
| Comments | Approved by | Company's seal |
| | | |
| Customer's Name: | | |

Please send the original back to us after you have approved and signed.

Modify History

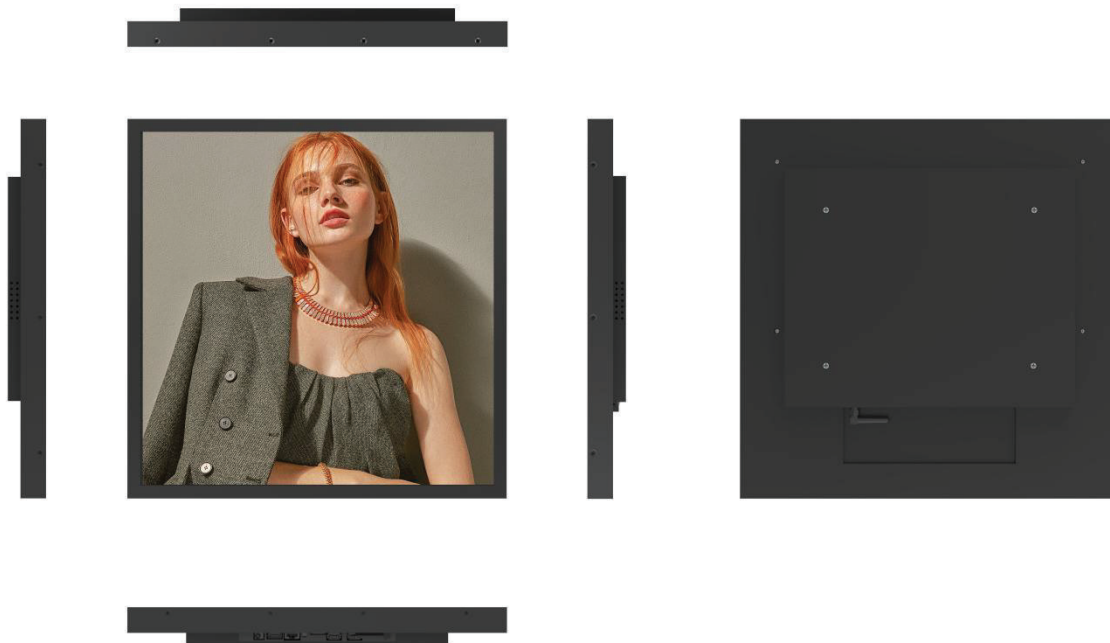
| Ver. | Page | Revised Descriptions | Date | Revision | Approval |
|---------|------|----------------------|------------|----------|----------|
| REV.1.0 | ALL | T0 | 2025.04.16 | | |
| | | | | | |
| | | | | | |

Product Parameter:

| 45" | | Specifications | Units/Number | Notes |
|-------------------|-----------------------|-------------------------|-------------------|-------|
| Model | | | | |
| | Dimension | 846 (L)*846(H)x47(W) | MM | |
| | Shell material | Black fine sand texture | - | |
| | Gross Weight | 15 | Kg/gross | |
| Screen Parameters | Display Size | 816.2(L)x816.2(H) | MM | |
| | Display- resolution | 1900*1900 | Pixel | |
| | Brightness | 500 | Cd/m ² | |
| | Contrast ratio | 1200:1 | - | |
| | Display scale | 1:1 | - | |
| | Viewing angle | 89/89/89/89 | - | |
| | Pixel pitch | 0.4296*0.4296 | MM | |
| | Display color | 1.07 | B | |
| Electrical | Maximum power | ≤120 | W | |
| | Standby power | ≤1 | W | |
| | Supply Voltage | 12V | V | |
| | Horn | 3W/8 Ω*2 | - | |
| WorkStorage | Operating temperature | 0-50 | °C | |
| | Working- humidity | 10%~80% | %hr | |
| | Storage temperature | -20-50 | °C | |
| | Storage Humidity | 10%~80% | %hr | |
| Power interface | | AC 110-240V | | |

| Model | | 45" | Specifications | Units/Number | Notes |
|--------------------------|------------------------------|--------------------------------|---|--------------|-------|
| Functional configuration | CPU | | RK3288, quad-core, 1.8GHz, Android 5.1.1 | | |
| | Operating System | | Android 5.1.1 | | |
| | Memory Storage | | Standard 2G (4G optional) / Standard 8G (16/32/64G optional) | | |
| | built-inROM | | / | | |
| | HDMI Out | | 1, supports 1080P@120Hz, 4kx2k@60Hz output | | |
| | HDMI import | | / | | |
| | Support Video-Formats | | Supports wmv, avi, flv, rm, rmvb, mpeg, ts | | |
| | Support Image-Formats | | Supports BMP, JPEG, PNG, GIF | | |
| | Audio Input/Output | | Supports left and right channel output, with built-in dual 4R/20W and 8R/10W power amplifiers | | |
| | Headphone Output | | Supports the insertion of one or two earphones | | |
| | USB Interface | | 2 USB HOST | | |
| | Serial Port | | 4 serial port sockets (2 TTL +2232), of which 1 is a Bluetooth multiplexed serial port | | |
| | Network Support | | Ethernet WIFI | | |
| | Memory Card | | Supports SD cards | | |
| | RTC | | Supports | | |
| System Upgrade | | Supports local SD USB upgrades | | | |

Product Rendering:



Product Dimension Drawing:

