

# SPECIFICATION

Product number: EC471AYA160

Product type: Bar display



<b>Checked by</b>	<b>Rechecked by</b>	<b>Approved by</b>
<b>Comments</b>	<b>Approved by</b>	<b>Company's seal</b>
<b>Customer's Name:</b>		

Please send the original back to us after you have approved and signed.

#### Modify History

<b>Ver.</b>	<b>Page</b>	<b>Revised Descriptions</b>	<b>Date</b>	<b>Revision</b>	<b>Approval</b>
REV.1.0	ALL	T0	2025.08.06		

# Product Parameter:

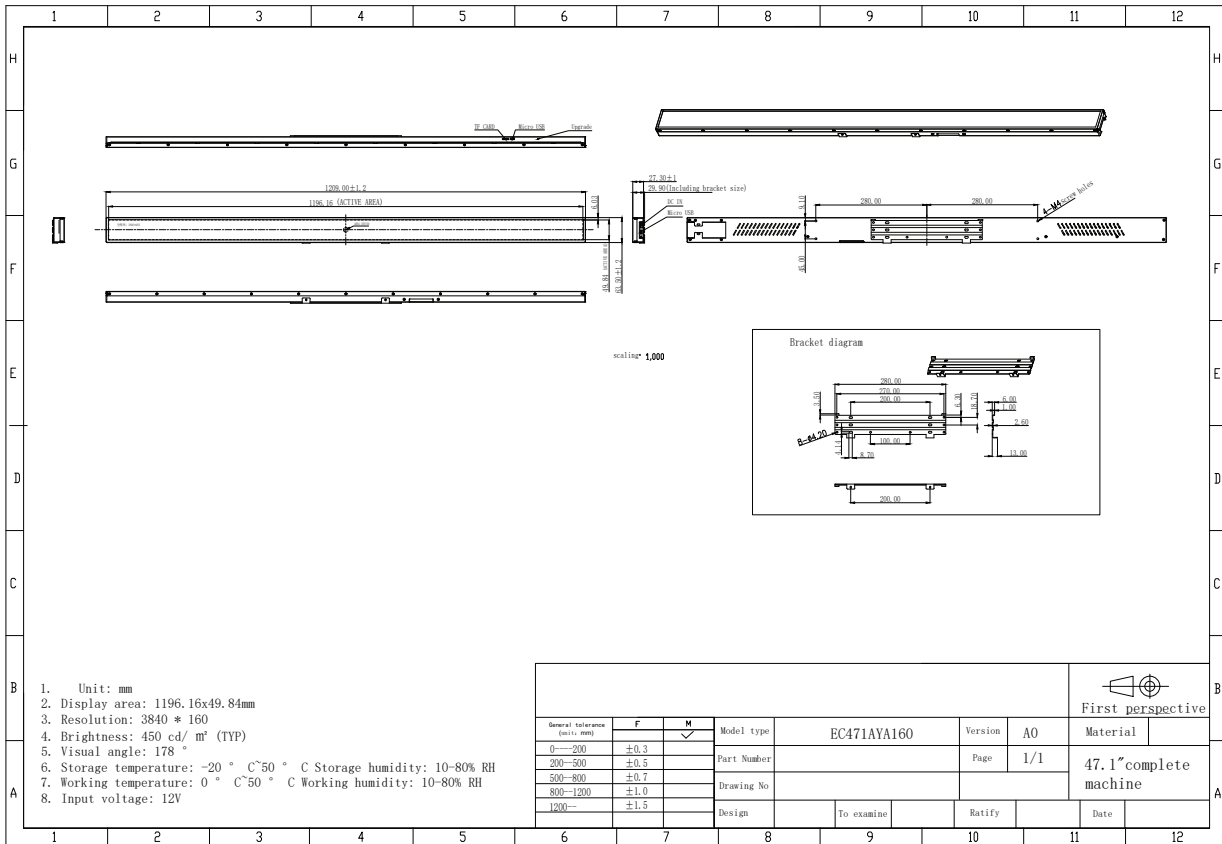
47.1"		Specifications	Units/Number	Notes
Model				
	Dimension	1209 (L)*63.5(V)*29.9(W)	MM	
	Shell material	Black fine sand pattern (color optional)	-	
	Gross Weight	2	Kg/gross	
Screen Parameters	Display Size	1196.16x49.84	MM	
	Display- resolution	3840*160	Pixel	
	Brightness	450	Cd/m <sup>2</sup>	
	Contrast ratio	1000:1	-	
	Display scale	16:0.8	-	
	Viewing angle	89/89/89/89 (Typ.)(CR≥10)	-	
	Pixel pitch	0.3115×0.3115	MM	
	Display color	16.7	M	
Electrical	Maximum power	≤35	W	
	Standby power	≤1	W	
	Supply Voltage	12	V	
	Horn	/	-	
WorkStorage	Operating temperature	0-50	°C	
	Working- humidity	10-80%	%hr	
	Storage temperature	-20-50	°C	
	Storage Humidity	10-80%	%hr	
Power interface		DC 12V 5A		

47.1"		Specifications	Units/ Number	Notes
Model				
Functional configuration	<b>CPU</b>	The Rockchip RK3568 is a quad-core Cortex-A55 with a maximum frequency of 2.0GHz and an integrated Mali-G52 GPU graphics processing unit		
	<b>Operating System</b>	Android11		
	<b>Memory Storage</b>	Standard 2GB LPDDR4 (optional 4/8GB), standard 16G internal storage (optional 8G/16G/32G/64G)		
	<b>built-inROM</b>	/		
	<b>HDMI Out</b>	/		
	<b>HDMI import</b>	/		
	<b>Support Video-Formats</b>	Supports wmv, avi, flv, rm, rmvb, mpeg, ts, mp4, etc		
	<b>Support Image-Formats</b>	Support BMP, JPEG, PNG, GIF, etc		
	<b>Audio Input/Output</b>	/		
	<b>Headphone Output</b>	/		
	<b>USB Interface</b>	1* OTG -micro USB,1*micro USB		
	<b>Serial Port</b>	4 serial ports (4 TTL serial ports, 2 of which can be selected as RS232 serial ports), 1 I2C interface, and 8 GPIO (attached to the UART Fuyong port for reserved control)		
	<b>Network Support</b>	Supports WIFI6 2.4G /5G dual-band wireless network access and Bluetooth V5.2 access		
	<b>Memory Card</b>	It can be connected to a maximum of 64G TF memory card		
	<b>RTC</b>	Supports timed on/off function		
<b>System Upgrade</b>	/			


# Product Rendering:



# Product Dimension Drawing:



1. Unit: mm
2. Display area: 1196.16x49.84mm
3. Resolution: 3840 \* 160
4. Brightness: 450 cd/ m<sup>2</sup> (TYP)
5. Visual angle: 178 °
6. Storage temperature: -20 ° C~50 ° C Storage humidity: 10-80% RH
7. Working temperature: 0 ° C~50 ° C Working humidity: 10-80% RH
8. Input voltage: 12V

				 First perspective			
General tolerance (unit: mm)	F	M	Model type	EC471AY160	Version	A0	Material
0—200	±0.3	✓	Part Number		Page	1/1	47.1" complete machine
200—500	±0.5		Drawing No				
500—800	±0.7		Design				
800—1200	±1.0		To examine		Ratify		
1200—	±1.5					Date	