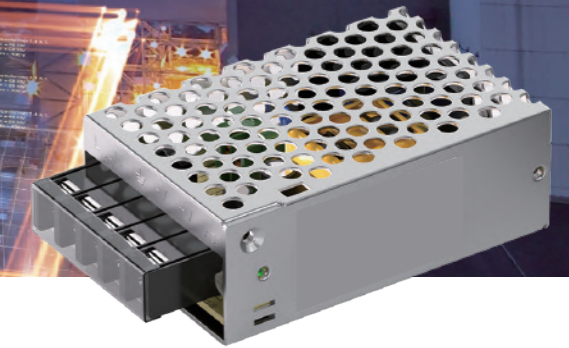


LRS series ultra-thin power efficient type



PRODUCT FEATURES

- ▶ Full range AC voltage input
- ▶ The efficiency reaches 88% at full load (230 V)
- ▶ Small size, aluminum cooling shell
- ▶ Low standby power consumption, less than 0.3W
- ▶ The working temperature can be as high as 70°C
- ▶ Protection type: short circuit protection/overload protection/overvoltage protection
- ▶ Natural air cooling/fan cooling
- ▶ Can be operated at an altitude of 2000 kilometers
- ▶ Full load aging test at 100% ambient temperature of 50°C
- ▶ LED start indicator
- ▶ 3C, CE, ROHS, FCC and other certifications.
- ▶ The output below 5V (including 5V) is synchronous

USAGE SCENARIO

- ▶ Electronic/scientific research instruments, industrial control equipment, camera monitoring equipment, medical equipment, lighting equipment, automation equipment, etc

PRODUCT SELECTION TABLE

MODEL	POWER	INPUT VOLTAGE RANGE	OUTPUT VOLTAGE	OUTPUT CURRENT	EFFCY	SIZE(L*W*H)MM
RS-15	15W	100-240VAC	12V / 24V	1.3A / 0.625A	88%	94*51*28
RS-25	25W	100-240VAC	12V / 24V	2.1A / 1.1A	88%	94*51*28
LRS-35	35W	100-240VAC	5V / 12V / 24V	7A / 3A / 1.5A	88%	99*82*30
LRS-50	50W	100-240VAC	5V / 12V / 24V / 36V / 48V	10A / 4.2A / 2.2A / 1.45A / 1.1A	88%	99*82*30
LRS-75	75W	100-240VAC	5V / 12V / 24V	15A / 6A / 3.2A	88%	99*97*30
LRS-100	100W	100-120VAC 200-240VAC	5V / 12V / 24V / 36V / 48V	20A / 8.5A / 4.5A / 2.8A / 2.3A	88%	129*97*30
LRS-120	120W	100-120VAC 200-240VAC	5V / 12V / 24V / 48V	24A / 10A / 5A / 2.5A	88%	129*97*30
LRS-150	150W	100-120VAC 200-240VAC	5V / 12V / 24V / 36V / 48V	30A / 12.5A / 6.5A / 4.3A / 3.3A	88%	159*97*30
LRS-200	200W	100-120VAC 200-240VAC	5V / 12V / 24V / 36V / 48V	40A / 17A / 8.8A / 5.9A / 4.4A	88%	215*110*30
LRS-250	250W	100-120VAC 200-240VAC	12V / 24V	20.8A / 10.4A	88%	215*110*30
LRS-350	350W	100-120VAC 200-240VAC	5V / 12V / 24V / 36V / 48V	60A / 29A / 14.6A / 9.7A / 7.3A	88%	215*115*30

The final parameters and specifications shall be subject to the Product Specification provided by our company

PRODUCT SELECTION TABLE

MODEL	POWER	INPUT VOLTAGE RANGE	OUTPUT VOLTAGE	OUTPUT CURRENT	EFFCY	SIZE(L*W*H)MM
LRS-400	400W	100-120VAC 200-240VAC	12V / 24V / 36V / 48V	33A / 16.6A / 11A / 8.4A	88%	215*115*30
LRS-450	450W	100-120VAC 200-240VAC	12V / 24V / 36V / 48V	37.5A / 18.8A / 12.5A / 9.4A	88%	215*115*30/
LRS-500	500W	100-120VAC 200-240VAC	12V / 24V / 36V / 48V	41.7A / 21A / 14A / 10.5A	88%	215*115*30 / 225*124*41
LRS-600	600W	100-120VAC 200-240VAC	12V / 24V / 36V / 48V	50A / 25A / 17A / 12.5A	88%	215*115*30 / 225*124*41

The final parameters and specifications shall be subject to the Product Specification provided by our company

PRODUCT SELECTION TABLE



RS-15, RS-25

LRS-35, LRS-50, LRS-75

LRS-100, LRS-120

LRS-150

LRS-200, LRS-250

LRS-350, LRS-400, LRS-450
LRS-500, LRS-600

LRS-450/LRS-500/LRS-600
(large volume)

The final parameters and specifications shall be subject to the Product Specification provided by our company